

# WHAT YOU NEED TO KNOW IF YOUR CHILD IS INVOLVED IN RELATIONAL PROBLEMS AT SCHOOL

## 0-Spotting the problem

- ☒ Has your child's behaviour changed without explanation?
- ☒ When you ask him about his/her school day, does he/she give no or a poor answer?
- ☒ Has his/her school results changed suddenly?
- ☒ Does he/she attach no importance to his/her relations with his/her school mates?
- ☒ Does he/she often complain of headaches, being tired, being not hungry?
- ☒ Does he/she eat too much or too little?
- ☒ Does he/she often complain of not feeling well and therefore not wanting to go to school?  
(You may contact the school nurse and keep an eye on the "nurse" pages of his/her liaison notebook)
- ☒ Does he/she seem more introverted and wanting to be alone?
- ☒ Have you noticed that his/her school things or clothes are damaged or stolen?
- ☒ Has he/she given you a vague explanation for his/her wounds?
- ☒ Is he/she reluctant to participate in gym lessons?
- ☒ Has he/she few or no friends?

## 1-What is mobbing?

Extract of the document "Working together against mobbing and bullying: Policy document" ESM Spring 2006

The borderlines in all interpersonal conflicts are blurred. This is a case of open and/or subtle violence towards individuals over a long period of time aimed to socially exclude the individual. The violence frequently occurs over a long period of time and/or is directed systematically towards a certain individual. This can either be in a verbal and/or physical form.

## 2- ESM information:

### 2-1 ESM School rules

Kindergarten and primary school

<http://www.esmunich.de/english/grundschule/hausordnung.php> (page 13)

In KG and GS, a precise procedure is available for the teachers.

Secondary school

<http://www.esmunich.de/english/hoehereschule/hausordnung.php> (3.1 Educational advisors)

Counselling for secondary pupils:

[http://www.esmunich.de/english/data/allg\\_info\\_foerderung.php](http://www.esmunich.de/english/data/allg_info_foerderung.php)

### 2-2 ESM mobbing policy

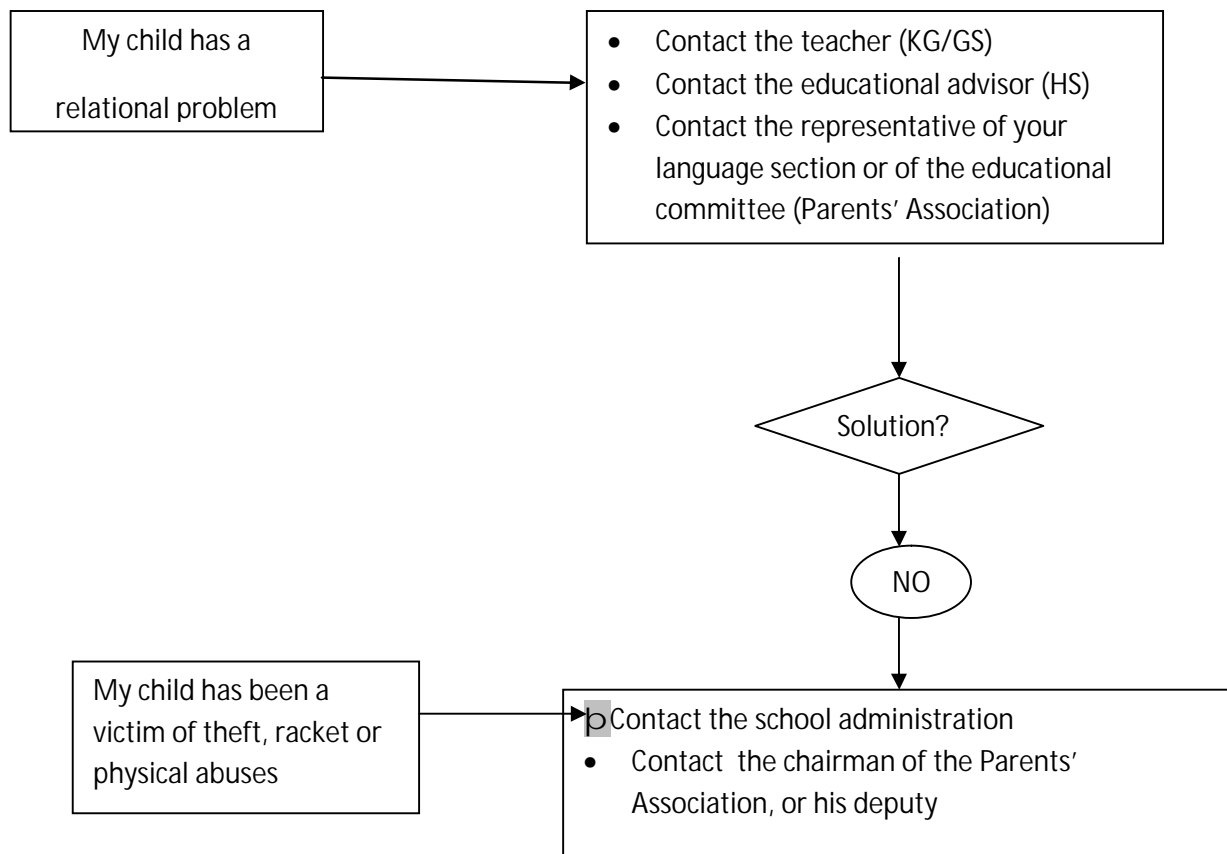
"Working together against mobbing and bullying: Policy document" ESM Spring 2006

### 2-3 Child Protection policy of the European Schools

<http://www.eursec.eu/index.php?id=205>

Document 2007-D-441-en-5 "Child Protection"

### 3-What can be done?



In case of punishment, you can find information concerning the discipline committees on: PA website

### 4-Links for more information:

[www.bullying.co.uk](http://www.bullying.co.uk)

<http://www.esculham.eu/GeneralInformation/ViewHandbook/tabid/171/smId/591/ArticleID/100/reftab/67/language/en-GB/Default.aspx?t=BULLYING--:Some-questions-and-answers>

<http://www.direct.gov.uk/en/Parents/Schoolslearninganddevelopment/YourChildsWelfareAtSchool/index.htm>

For more information or data concerning professional help, please contact the representative of your language section of the Parent's Association.